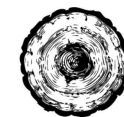


NORclad® PROFILE SHEET



NORclad®
Part of **National Timber Group**



NWC1

RECOMMENDED FOR BRUNNEA REDWOOD,
EUROPEAN LARCH AND THERMOWOOD
(AVAILABLE 142MM WIDE)



NWC2

RECOMMENDED FOR BRUNNEA REDWOOD,
EUROPEAN LARCH AND THERMOWOOD
(AVAILABLE 142MM WIDE)



NWC4



NWC1 18MM

RECOMMENDED FOR WESTERN RED CEDAR



NWC2 18MM

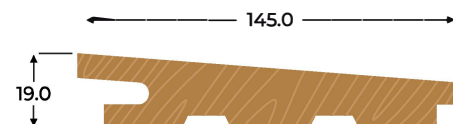
RECOMMENDED FOR WESTERN RED CEDAR



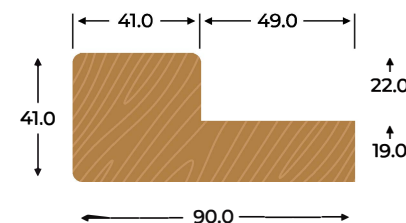
NWS1



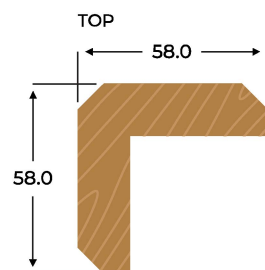
NWCC1



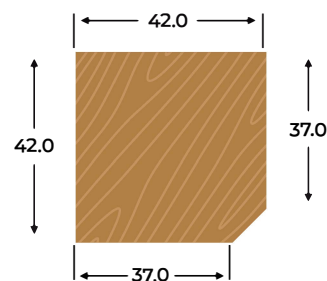
NWFE2-19



NWPA6

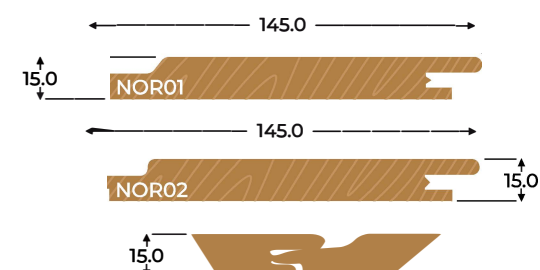


NWA3



NWA4

ALSO AVAILABLE WITH
ROUNDED CORNERS FOR
COATED CLADDING



NOR01 & NOR02

ACCOYA ONLY AND SUITABLE FOR COATING